

## Profile of East Barnet Ward



### Geography

East Barnet is the eighth largest of Barnet’s wards with an area of 8 square kilometres.

### Population

In 2012 East Barnet is the 9<sup>th</sup> largest ward with 16,859 residents. It is projected to increase slightly in the next decade, by 0.3%, to 16,906 residents and will then be 10<sup>th</sup> largest. (Source: Barnet Hybrid Solution updated for MYE Jan 2012 update)

Population Density: 43 per hectare Rank in Barnet: 14<sup>th</sup> most dense

No. of Households: 6531

(Source: Census 2011<sup>1</sup>)

### Age Profile

The ward’s age structure mirrors that of the borough as a whole in all age groups. (Source: Barnet Hybrid Solution updated for MYE Jan 2012 update)

**Figure 1. Age Profile**

2012	0-14	15-39	40-59	60-79	80+
<b>EAST BARNET</b>	19%	35%	29%	15%	3%
<b>BARNET</b>	21%	35%	26%	14%	4%

<sup>1</sup> Census output is Crown copyright and is reproduced with the permission of the Controller of HMSO and the Queen's Printer for Scotland.

## Ethnicity

75% of East Barnet residents describe their ethnic origin as White British; the second highest proportion in Barnet and higher than the Barnet average of 59%. East Barnet's profile is roughly in line with the Barnet average for all other groups.

(Source: Barnet Census Profiles 2001)

## Religion

In terms of faith the ward also has the highest proportion of Christians among its residents (54% as against 41% for the borough). East Barnet has the third lowest proportion of Muslim residents in Barnet, 6% against the borough average of 10%, and a higher than average proportion of residents with no religion. (Source: Census 2011)

**Figure 2. Religion Profile**

Ward/Area	Christian	Buddhist	Hindu	Jewish	Muslim	Sikh	Other Religion	No Religion	Religion not stated
<b>BARNET</b>	41%	1%	6%	15%	10%	0%	1%	16%	8%
<b>East Barnet</b>	54%	1%	4%	5%	6%	0%	1%	21%	8%

## Languages

31% of school children in East Barnet do not speak English as a first language in the home. This is lower than the Barnet average (44%). Greek, Turkish and Persian-Farsi are the most common languages other than English spoken in the homes of East Barnet pupils attending Barnet schools (with 88, 58 and 47 pupils respectively), followed by French and Gujarati.

(Source: PLASC January 2012: this data does not include pupils from East Barnet who attend private schools or schools outside Barnet.)

## Deprivation

The 2010 Index of Deprivation shows Barnet as a whole to be the 176<sup>th</sup> most deprived local authority out of the 354 for England and Wales – slightly below the average. Barnet has become less deprived in relation to England over the last three years. None of the LSOA's<sup>2</sup> in East Barnet are within the 10% most income deprived nationally.

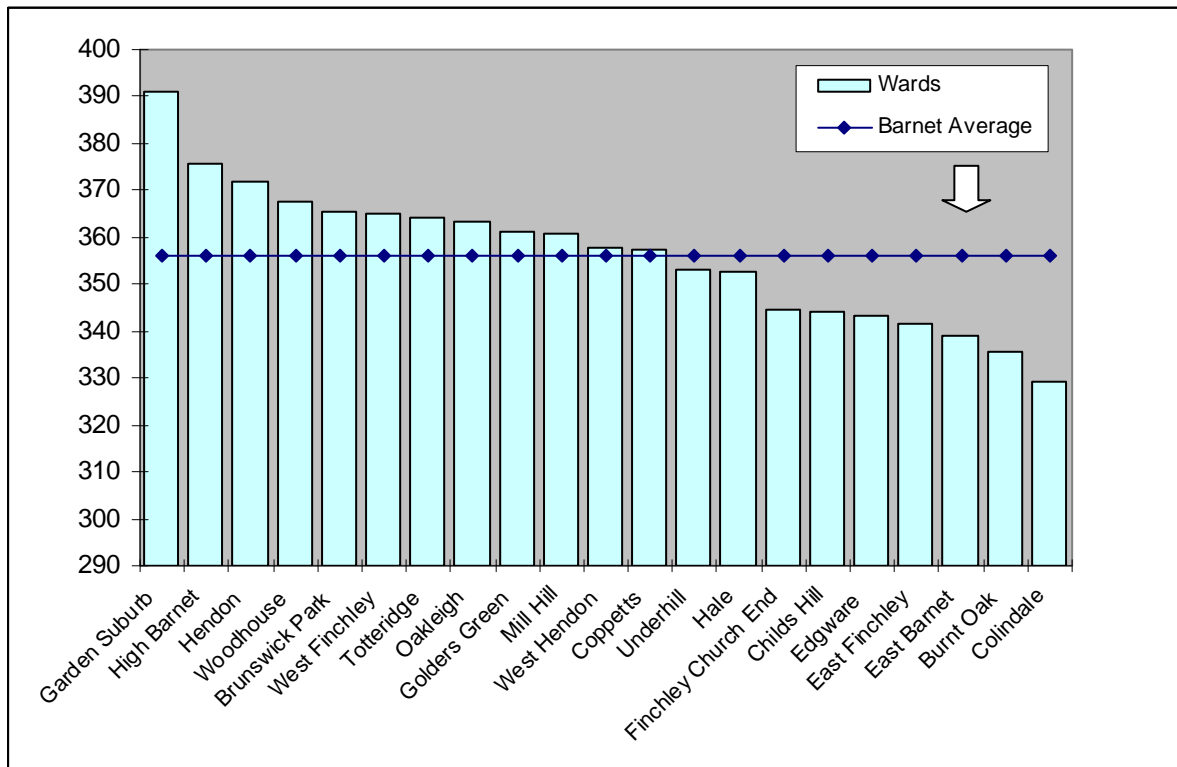
(Source: [http://www.barnet.gov.uk/download/downloads/id/2348/deprivation\\_in\\_barnet\\_2012](http://www.barnet.gov.uk/download/downloads/id/2348/deprivation_in_barnet_2012))

## Education

The data for 2011/12 in the graph below shows the results for the 2,655 Barnet residents attending Barnet schools who took GCSEs. It shows pupils living in East Barnet had the third lowest GCSE equivalent point scores per pupil in the borough. (Source: Performance & Data Management, Children's Service, LBB)

<sup>2</sup>Lower Super Output Areas (LSOAs) are standard statistical geographies developed by the Office for National Statistics, which contain around 1,500 people.

**Figure 3. Average GCSE scores for 2011/12, by pupil's ward of residence**



**Income**

Data from the company CACI shows East Barnet to have a median average household income of £33,871 – in line with the borough average which was £33,701, and ranking 10<sup>th</sup> highest in the borough. (Source: CACI Paycheck data 2012)

**Working Age Benefits**

The Jobseeker's allowance (JSA) is payable to people under pensionable age who are available for, and actively seeking, work. The overall rate of claiming for East Barnet residents is slightly higher than the borough average but lower than national levels. (Source: [www.nomisweb.co.uk](http://www.nomisweb.co.uk))

**Figure 4. Total Jobseekers Allowance claimants (January 2013)**

	East Barnet (numbers)	East Barnet (%)	Barnet (%)	Great Britain (%)
All people	356	3.0	2.8	3.8
Males	229	3.7	3.4	5.0
Females	127	2.3	2.2	2.6

**Figure 5. DWP benefit claimants (May 2012)**

	East Barnet (numbers)	East Barnet (%)	Barnet (%)	Great Britain (%)
All people	1,290	11.0	11.0	14.4
Job seekers	310	2.6	2.8	3.7
ESA & Incapacity benefits	540	4.6	4.7	6.3
Lone parents	165	1.4	1.4	1.5
Carers	105	0.9	0.9	1.2
Others on income related benefits	40	0.3	0.3	0.4
Disabled	110	0.9	0.8	1.1
Bereaved	20	0.2	0.2	0.2
Key out-of-work benefits <sup>3</sup>	1,055	9.0	9.2	11.9

## Health

Average life expectancy is a key summary indicator of health. For men and women, the East Barnet figure is higher than the average for Barnet, London & England.

(Source: ONS Life expectancy by ward 1999-2007)

**Figure 6. Life Expectancy in Years**

	Males	Females
East Barnet	79.3	83.9
Barnet	78.6	82.7
London	77.1	81.7
England	77.3	81.5

## Crime

For all categories except 'Burglary' and 'Fraud or forgery', crime rates in the year to February 2013 in Barnet are low compared with London as a whole. In the case of East Barnet, it is either equal to, or in more cases, below the Barnet average in all categories, except for 'Burglary' and 'Drugs offences' where it is slightly above.

(Source: Metropolitan Police Service).

Note: a crime is categorised as a robbery where force is intimated or used to steal property. Burglary is theft, or attempted theft, from a building where access is not authorised.

<sup>3</sup> Key out-of-work benefits includes the groups: job seekers, ESA and incapacity benefits, lone parents and others on income related benefits

## Mosaic

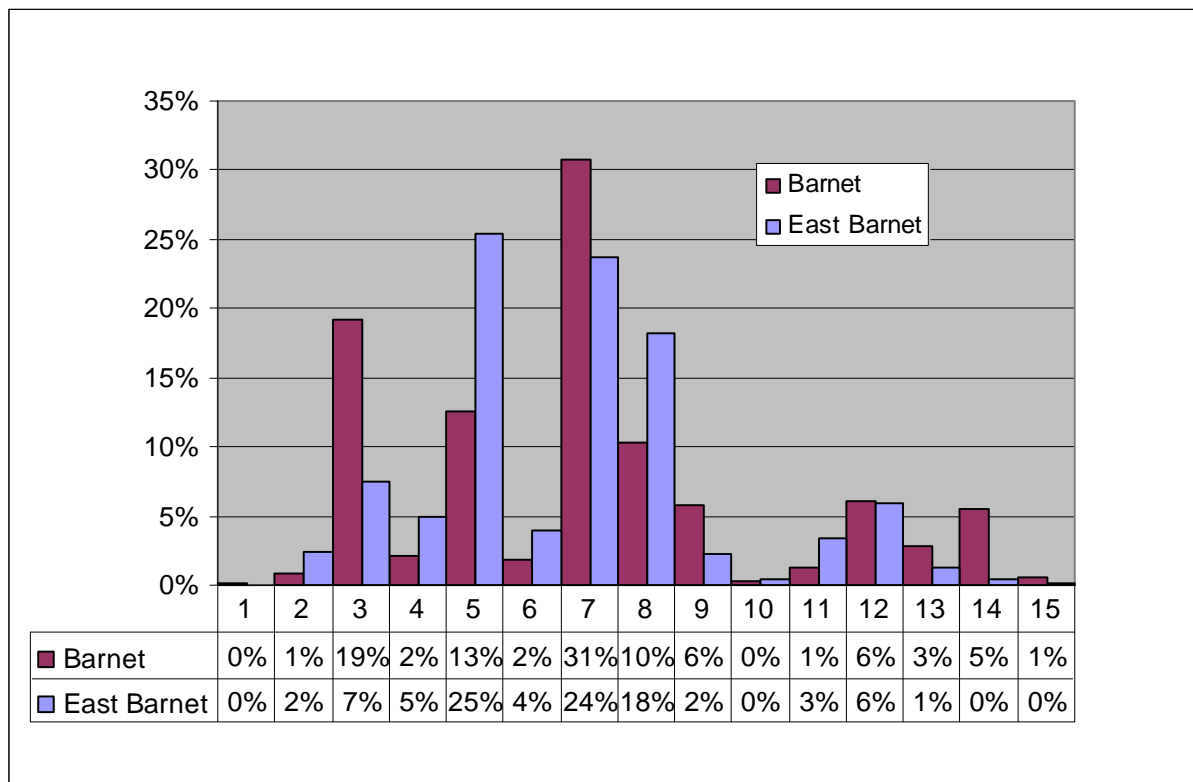
The council has bought the data used in this section from a commercial organisation, Experian. If the findings are used in other documents then this source must be acknowledged and copyright quoted in the following way: Mosaic data 2010 © Copyright 2004 Experian Ltd

- Experian’s Mosaic data brings together a large amount of data about areas and individual households from a variety of sources to classify all households according to 15 Groups and 67 Types. Experian does not claim one hundred percent accuracy for this product but it does use strong correlations to arrive at good predictions about the nature of each household in the borough. The classifications are highly detailed but summed up with a headline phrase.

### Mosaic Groups in East Barnet

- East Barnet has a substantially higher than average proportion of households in Group 5; these are Middle income families living in moderate suburban semis.
- East Barnet has substantially less than the borough average of Group 3 - Wealthy people living in the most sought after neighbourhoods

**Figure 7. Mosaic Groups in East Barnet**



Group Code	Group Description
1	Residents of isolated rural communities
2	Residents of small and mid-sized towns with strong local roots
3	Wealthy people living in the most sought after neighbourhoods
4	Successful professionals living in suburban or semi-rural homes
5	Middle income families living in moderate suburban semis
6	Couples with young children in comfortable modern housing
7	Young, well-educated city dwellers
8	Couples and young singles in small modern starter homes

Group Code	Group Description
9	Lower income workers in urban terraces in often diverse areas
10	Owner occupiers in older-style housing in ex-industrial areas
11	Residents with sufficient incomes in right-to-buy social housing
12	Active elderly people living in pleasant retirement locations
13	Elderly people reliant on state support
14	Young people renting flats in high density social housing
15	Families in low-rise social housing with high levels of benefit need