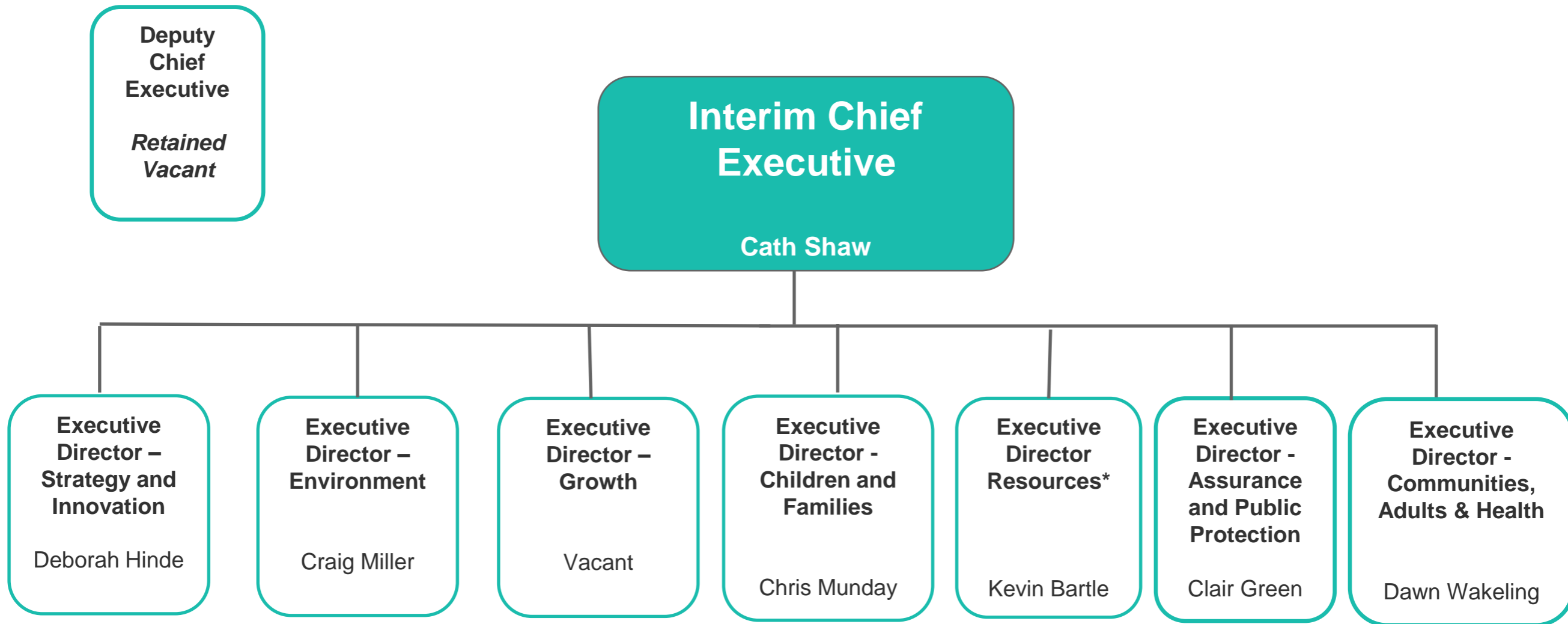


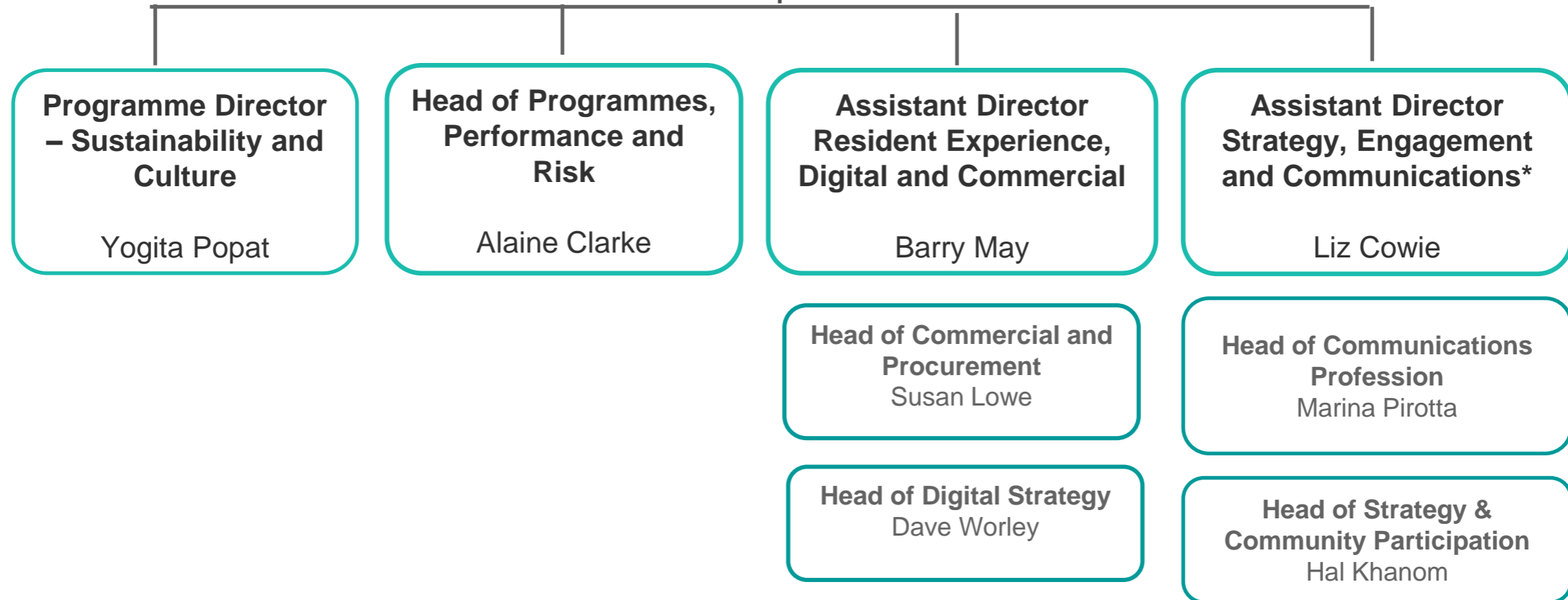
# Senior Management Structure Chart



\* Interim providing maternity cover for Executive Director Strategy & Resources

# Executive Director Strategy and Innovation

Deborah Hinde



\* The Strategy, Engagement and Communications Team reports into the Executive Director Strategy & Innovation during the maternity leave of the Executive Director Strategy & Resources

# Executive Director Environment

Craig Miller

**Director Highways and Transportation**  
Ian Edser

**Operations Director Highways**  
Alice Nugent

**Assistant Director Business Operations**  
Roger Greensted

**Head of Contracts & Network Management**  
Andy Hilsdon

**Head of Parking Design Traffic and Travel**  
Sudhish Nair

**Head of Highways Asset Management**  
Daniela Pometti

**Head of Innovation & Business Change**  
Kathryn Lea

**Assistant Director Street Scene, Operations and Transport**  
Vishal Thaker

**Head of Street Scene Service Support**  
Andy Joseph

**Head of Parking & Parking Enforcement**  
Phinneas Skipper & Rebecca Eden  
(Job Share)

**Head of Network & Infrastructure**  
Paul Bragg

# Executive Director Growth

Vacant

**Director Planning and Building Control**

Fabien Gaudin

**Director Housing, Economy and Placemaking**

Luke Ward

**Assistant Director Development, Partnerships and Regeneration**

Abid Arai

**Assistant Director Capital Delivery**

Matt Waters

**Assistant Director Estates and Decarbonisation**

Chris Smith

**AD Planning & Building Control**  
Neeru Kareer

**AD Brent Cross Delivery**  
Vacant

**Head of Development Management**  
Andy Bates

**Head of Economy & Skills**  
John Bryson

**Head of Building Control**  
Michael Keown

**Head of Strategic Housing**  
Susan Curran

**Head of Planning Enforcement & Compliance**  
Iain Sutherland-Thomas

**Head of Housing Regulatory Services**  
Belinda Livesey

**Head of Business & Customer Support**  
Paula O'Dumody

**Head of Placemaking**  
Reeta Hirani

**Head of Estates**  
Syma Kadri

# Executive Director Children and Families

Chris Munday

## Director Children's Social Care (Help & Protection)

Tina McElligott

Head of MASH, YOS,  
REACH, LADO & EDT  
Sarah Marshall

Head of Service – Duty &  
Assessment, Intervention  
& Planning, Domestic  
Abuse & VAWG  
Karen Popely

Head of Children &  
Families Early Help  
Karen Pearson

Head of Safeguarding,  
Quality & Workforce Dev  
Donna Swanberg

Clinical Lead - Barnet  
Integrated Clinical Service  
(BICS)  
Nicola Labuschagne

## Director Children's Social Care (Corporate Parenting & Disability)

Brigitte Jordaan

Head of Disability  
Services, Specialist  
Autism Team &  
Placement Sufficiency  
Owen Chiguvare

Head of CIC, O&U,  
Placements, Fostering &  
Carer recruitment, Family  
Resource centre,  
Children's homes  
Kate Jeffrey

## Assistant Director Commissioning

Collette McCarthy

Head of Libraries  
Hannah Richens

Head of Support Service  
Rachel Williams

## Assistant Director Education, Strategy & Partnership

Ben Thomas

\* Interim providing maternity cover for Executive Director Strategy & Resources

# Executive Director Resources (s151) \*

Kevin Bartle

**Assistant Director Accountancy (Deputy s151)**  
Jyotika Dabasia

**Head of Finance Chief Accountant**  
Mohammed Ahmed

**Assistant Director- HR, OD & Exchequer**

Jon Bell

**Head of Finance Exchequer**  
Allan Clark

**Head of Employee Relations & Reward**  
Sharni Kent

**Head of Organisational Development**  
Samantha Reilly

**Head of Recruitment & Resourcing**  
Matt Richards

**Assistant Director Business Partnering**

Dean Langsdon

**Head of Finance Customer & Place**  
Devrim Marriott

**Head of Finance Communities, Adults & Health**  
Michael Taylor

**Head of Finance Children's and Family Services**  
Sharon Palma

**Head of Finance Major Projects & Growth**  
Gary Hussein

**Head of Pensions and Treasury**

David Spreckley

# Executive Director Assurance and Public Protection

Clair Green

**Chief Legal  
Advisor and  
Monitoring  
Officer**

Jessica Farmer

**AD Counter  
Fraud,  
Community  
Safety and  
Protection**

Declan Khan

**CAFT Manager**  
Yvette Lynch

**Head of  
Community Safety,  
enforcement,  
CCTV &  
Intelligence**

Maggie Higton-  
Brown \*Maternity  
leave until Oct 2024 –  
Declan Khan covering

**Head of Consumer  
& Public Protection**  
Ella Smallcombe

**Assistant Director  
Assurance**

Emily Bowler

**Head of Electoral  
Services**  
John Bailey

**Head of Assurance &  
Business  
Development**  
Ali Saka

**Head of Governance**  
Andrew Charlwood

**Head of Internal  
Audit**

Caroline Glitre

**Acting Head of  
Emergency  
Planning &  
Business  
Continuity**

Caitlin James

# Executive Director Communities, Adults & Health

Dawn Wakeling

## Director Adults Social Care

James Mass

Head of Mental Health  
Teresa Gravett-Smith

Head of Safeguarding,  
Access & OT  
Monica Przyzycka

Interim Head of  
Hospitals & Health  
Shazia Deen

Head of Localities  
(older people &  
physical disabilities)  
Harsha Pindoria

Head of Integrated  
Care Learning  
Disabilities  
Andrew Maskell

Principal Social  
Worker (Head of  
Service)  
Carol Baxter

## Interim Director of Public Health

Janet Djomba

Deputy Director of  
Public Health  
Vacant

\*Head of Insight and  
Intelligence  
James Rapkin

\*Head of Health, Safety  
and Wellbeing  
Mike Koumi

Head of Public Health  
Commissioning  
Luke Kwamya

Public Health Consultant  
Emma Waters

Public Health Consultant  
Rachel Wells

Public Health Consultant  
Deborah Jenkins

Health and Wellbeing  
Policy Manager  
Claire O'Callaghan

## Director of Commissioning

Jess Baines-Holmes

Head of Commissioning  
Housing &  
Accommodation Based  
Services  
Sue Tomlin/Rosie Greer (Job  
share)

Head of Commissioning  
Community, Prevention &  
Technology  
Ellie Chesterman

Head of Business  
Development  
Neda Mazraeh

## Assistant Director Care Quality & Performance

Courtney Davis

Head of Transformation  
Lindsey Hyde

Head of Performance &  
Systems  
Paul Kennedy

Head of Integrated Care  
Quality & Customer Finance  
Sam Jacobson

## Assistant Director Green Spaces & Leisure

Cassie Bridger

Head of Greenspaces  
Matthew Gunyon