

Hendon Cemetery & Crematorium
Holder's Hill Road
London
NW7 1NB



Walks



Hendon Cemetery was established in 1899 by the Abney Park Cemetery Company and occupies some 42 Acres of mature parkland. The grounds make an excellent place for reflection and an opportunity to walk in relative peace and quiet.

We welcome visitors to the Cemetery and have mapped out some walks with approximate distances to help plan your time.

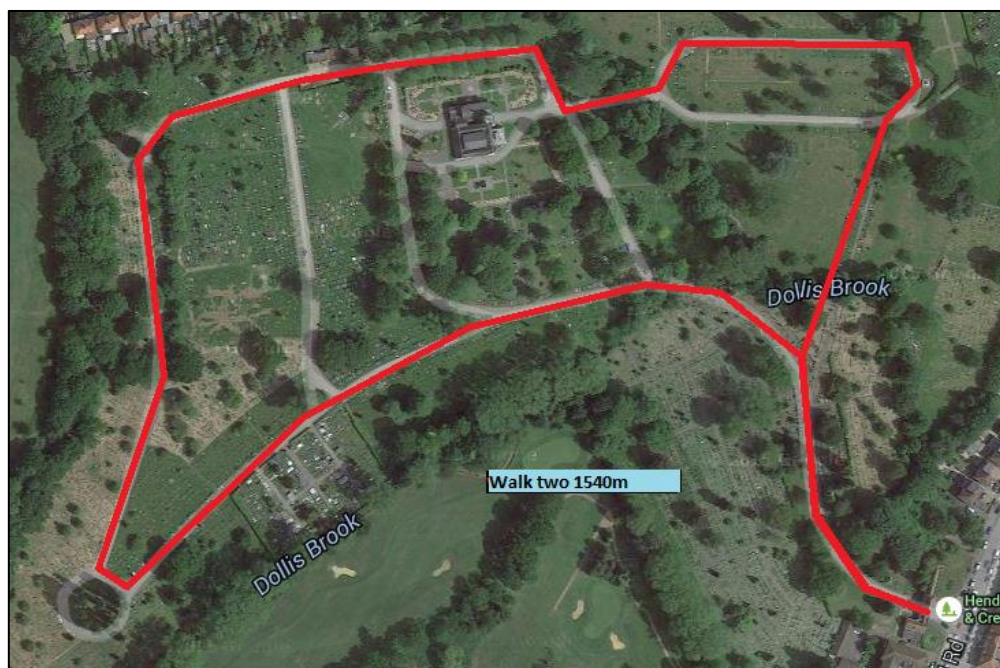
All that we ask is that you respect that Hendon Cemetery is a working cemetery and that many of our visitors are in a state of grief. Whilst we welcome dogs on site, they must be kept on a lead at all times and all litter and waste must be taken away with you at the end of your visit.

Children must be accompanied at all times and must not play amongst the headstones.

Walk one is a complete circuit of the roads around the Cemetery



Walk two is similar to walk one but takes a shortcut from the War Memorial along one of our footpaths.



Walk three is for those with a little less time, perhaps a quick lunchtime stroll.



There are many other combinations of walk of varying distances within the Cemetery, you are welcome to come and explore.